

PPM1G Antibody (Center)
Purified Rabbit Polyclonal Antibody (Pab)
Catalog # AP8434b

Specification

PPM1G Antibody (Center) - Product Information

Application	WB,E
Primary Accession	O15355
Reactivity	Human, Mouse
Host	Rabbit
Clonality	Polyclonal
Isotype	Rabbit IgG
Calculated MW	59272
Antigen Region	150-180

PPM1G Antibody (Center) - Additional Information

Gene ID 5496

Other Names

Protein phosphatase 1G, Protein phosphatase 1C, Protein phosphatase 2C isoform gamma, PP2C-gamma, Protein phosphatase magnesium-dependent 1 gamma, PPM1G, PPM1C

Target/Specificity

This PPM1G antibody is generated from rabbits immunized with a KLH conjugated synthetic peptide between 150-180 amino acids from the Central region of human PPM1G.

Dilution

WB~~1:1000

E~~Use at an assay dependent concentration.

Format

Purified polyclonal antibody supplied in PBS with 0.09% (W/V) sodium azide. This antibody is prepared by Saturated Ammonium Sulfate (SAS) precipitation followed by dialysis against PBS.

Storage

Maintain refrigerated at 2-8°C for up to 2 weeks. For long term storage store at -20°C in small aliquots to prevent freeze-thaw cycles.

Precautions

PPM1G Antibody (Center) is for research use only and not for use in diagnostic or therapeutic procedures.

PPM1G Antibody (Center) - Protein Information

Name PPM1G

Synonyms PPM1C

Cellular Location

Cytoplasm. Membrane; Lipid-anchor

Tissue Location

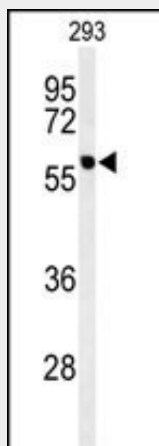
Widely expressed. Most abundant in testis, skeletal muscle, and heart

PPM1G Antibody (Center) - Protocols

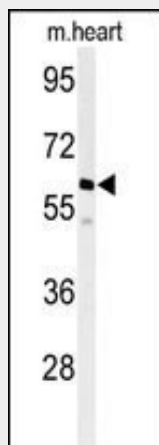
Provided below are standard protocols that you may find useful for product applications.

- [Western Blot](#)
- [Blocking Peptides](#)
- [Dot Blot](#)
- [Immunohistochemistry](#)
- [Immunofluorescence](#)
- [Immunoprecipitation](#)
- [Flow Cytometry](#)
- [Cell Culture](#)

PPM1G Antibody (Center) - Images



Western blot analysis of hPPM1G-C164 (Cat. #AP8434b) in 293 cell line lysates (35ug/lane). PPM1G (arrow) was detected using the purified Pab.



Western blot analysis of hPPM1G-C164 (Cat. #AP8434b) in mouse heart tissue lysates

(35ug/lane). PPM1G (arrow) was detected using the purified Pab.

PPM1G Antibody (Center) - Background

PPM1G is a member of the PP2C family of Ser/Thr protein phosphatases. PP2C family members are known to be negative regulators of cell stress response pathways. This phosphatase is found to be responsible for the dephosphorylation of Pre-mRNA splicing factors, which is important for the formation of functional spliceosome. Studies of a similar gene in mice suggested a role of this phosphatase in regulating cell cycle progression.